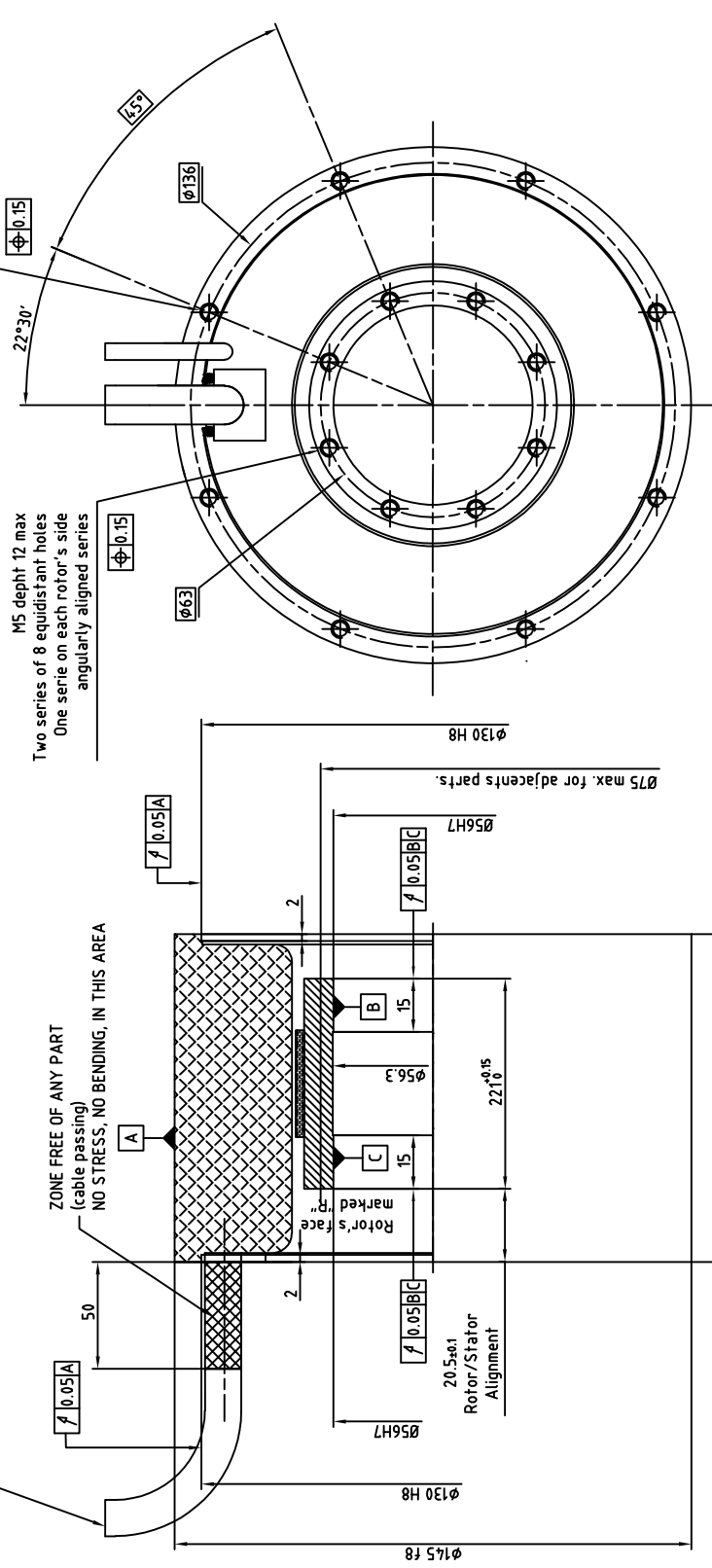


Cable output length 2m:  
 Power:  
 One shielded class 6 cable coded (4x1.5mm<sup>2</sup>)1,2,3 green/yellow overall  $\phi 8.6$   
 Thermal sensors:  
 One shielded class 6 cable (2x2x0.25mm<sup>2</sup>) overall  $\phi 7$   
 Brown-White : PTC  
 Green-Yellow : KTY84  
 Minimum bending radius (except for the first 50mm):  
 103mm for power cable  
 84mm for sensors cable



M5 depth 12 max  
 Two series of 8 equidistant holes  
 One serie on each stator's side  
 angularly aligned series

M5 depth 12 max  
 Two series of 8 equidistant holes  
 One serie on each rotor's side  
 angularly aligned series

NOTA:  
 Rotor is not fitted in the stator  
 For more information about mounting see  
 document 145STKO-WA002

# ALXION

AUTOMATIQUE & PRODUCTIQUE  
 Parc Technologique des Fossés Jean  
 92712 COL OMNES Cedex  
 Tél: 014-1306304 - Fax: 014-1306136

145ATK7M1XXXXXX