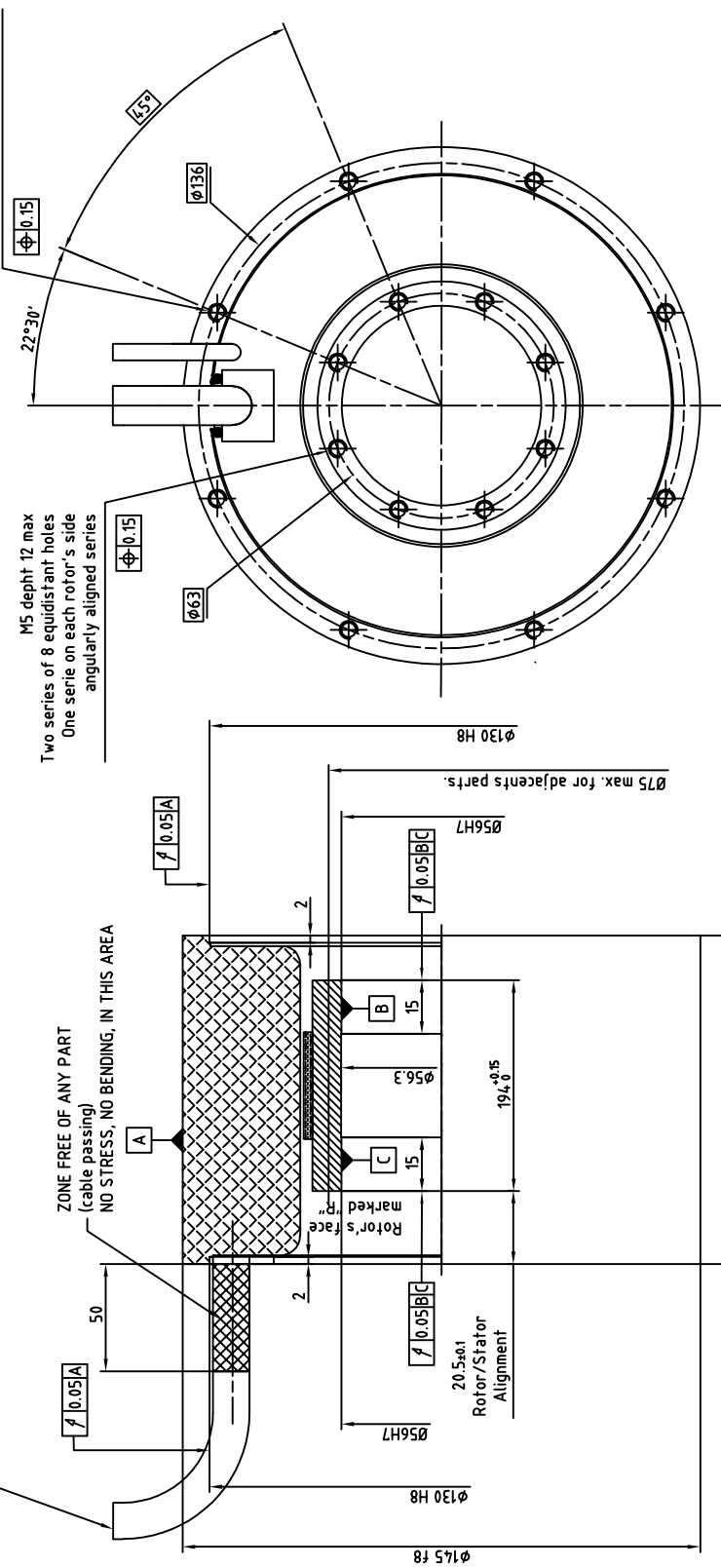


Cable output length 2m:
 Power:
 One shielded class 6 cable coded (4x1.5mm²), 1,2,3 green/yellow overall $\phi 8.6$
 Thermal sensors:
 One shielded class 6 cable (2x2x0.25mm²) overall $\phi 7$
 Brown-White : PTC
 Green-Yellow : KTY84
 Minimum bending radius (except for the first 50mm):
 103mm for power cable
 84mm for sensors cable



NOTA:
 Rotor is not fitted in the stator
 For more information about mounting see
 document 145STKO-WA002

ALXION
 AUTOMATIQUE & PRODUCTIQUE
 Parc Technologique des Fossés Jean
 92712 COLONBES Cedex
 Tél: 014-1306304 - Fax: 014-1306136

145ATK6M1XXXXXX